

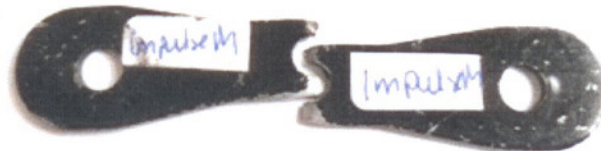


Load test report EN



The model describe hereafter is in conformity with the load and shock tests carried out by:
para-test.com, official test laboratory of Switzerland
EN 926-1:2006

Manufacturer **Windtech Paragliders**
Glider model **Impulse M**
Max. load (kg). **180 kg**



Shock test

1000 daN

The model had no appearant damages to question its airworthiness.

Mechanical resistance test

The model had been tested to 8G of it's total weight in flight during 3 sec

Villeneuve, 28. 11. 2009

Randi Eriksen