

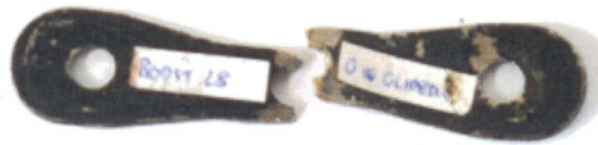


## Load test report



The model describe hereafter is in conformity with the load and shock tests carried out by:  
**para-test.com, official test laboratory of Switzerland**  
EN 926-1:2006

Manufacturer ..... **Gin Gliders Inc.**  
Glider model ..... **Boost L**  
Max. load (kg). ..... **209 kg**



### Shock test

**1000 daN**

The model had no appearant damages to question its airworthiness.

### Mechanical resistance test

The model had been tested to 8G of it's total weight in flight during 3 sec

Villeneuve, 29. 11. 2008

Randi Eriksen